



ISV Series No. BF2ER

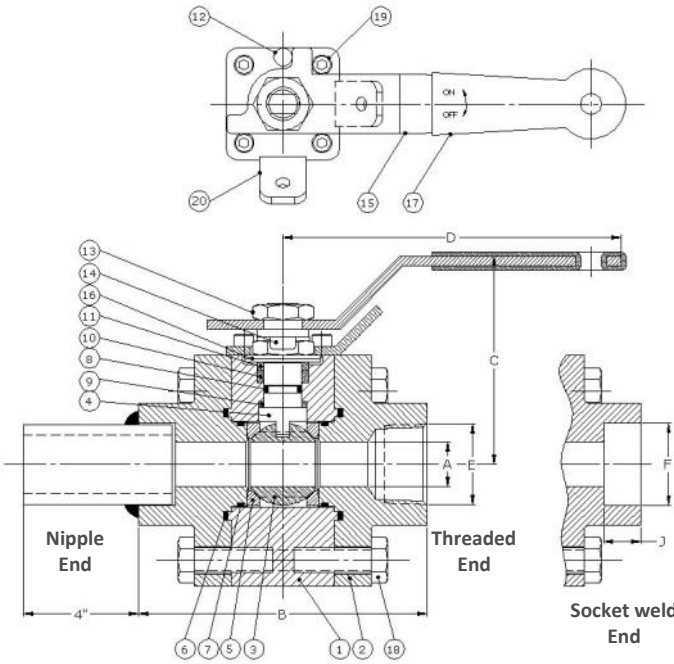
3 Piece Bolted Body Reduce Port Floating Ball Valve

ASME B16.34 Code Compliant

**Threaded, Socket Weld, Butt-Weld
and Nipple End Connection options**



PRESSURE RATING: *Water, Oil or Gas*
3600 PSIG @ 100F W.O.G.—A105N and F316 Body



Socket weld end installation note: Excessive heat generated during the welding process may cause damage to the valve seats. Use of factory furnished nipple end connection option should be considered when appropriate control of welding heat can not be applied by the installer.

DIMENSIONS

Valve Size	A	B	C	D	E	F	J	Cv	ISO	Wt. (LBS)
1/2"	.437	3.54	2.93	5.71	NPT - 1/2"	.855	.38	8	F03	5.3
3/4"	.571	3.74	2.93	5.71	NPT - 3/4"	1.065	.50	13	F03	5.4
1"	.748	.433	3.16	6.50	NPT - 1"	1.330	.50	33	F03	9.6
1 1/2"	1.259	5.04	4.35	9.84	NPT - 1 1/2"	1.915	.50	81	F05	16.5
2"	1.496	6.14	4.87	11.81	NPT - 2"	2.406	.62	119	F05	29.9

DESIGN & PRODUCTION FEATURES

3 piece bolted body design simplifies maintenance activities long after installation.

- Adjustable live loaded stem packing plus reliable o-ring stem seal
- Replaceable body section

- ASME B16.34 & API 608—code compliant
- Pressure tested to API 598
- PEEK seats for higher pressure performance
- Fire safe tested to API 607 5th Edition
- A105N or F316 body material are available
- Locking Lever is standard on all valves
- Optional locking oval handles are available
- Meets NACE
- ISO actuator mounting pad

MATERIALS OF CONSTRUCTION

No.	PART NAME	MATERIAL	
1	BODY	A105N	F316SS
2	END CAP	A105N	F316SS
3	BALL	17-4 PH + ENP	
4	STEM	17-4 PH	
5	SEAT	PEEK + 15% G.F.	
6	BODY - CAP GASKET	GRAPHITE	
7	BODY - CAP - O-RING	VITON	
8	STEM O-RING	VITON	
9	THRUST WASHER	GRAPHITE	
10	GLAND RING	304SS	
11	STEM PACKING	GRAPHITE	
12	STOP SCREW	304SS	
13	STEM NUT	304SS	
14	LOCK WASHER	304SS	
15	LEVER	304SS	
16	BELLEVILLE SPRING WASHER	301SS	
17	PLASTIC SLEEVE	VINYL	
18	BOLT	A193 B7M	A193 B8
19	SCREW	304SS	
20	LOCKING PLATE	304SS	

DESIGN STANDARDS

Basic Design		ASME B16.34, API 608
Pressure test		API 598
Ends	Threaded	ASME B16.11, B1.20.1
	Socket-weld	ASME B16.11
	Butt-weld	ASME B16.25

QUALITY MANAGEMENT SYSTEM

CERTIFIED BY DNV

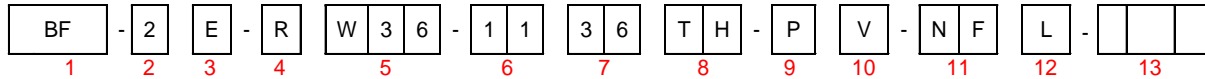
ISO 9001:2008

International Standard Valve, Inc.

Specifying ISV Series No. BF2ER ASME Code Compliant

Example: ISV figure number **BF2E-RW36-1136TH-PV-NFL**

Describes a 3600 PSIG W.O.G. three piece threaded body design floating type ball valve, reduced port, female threaded ends, with A105N body material, 316SS ball & stem, PEEK seat and Viton seals, with locking lever operator. Meets NACE and is fire safe tested.



1. Valve Type		2. Service /Design Style		3. Body Design		4. Bore		5. Working Pressure		6. Body Material	
Code	Description	Code	Description	Code	Description	Code	Description	Code	W.O.G.	Code	Description
BT	Ball Valve Trunnion	0	Adjustable Packing- (Commercial Design)	A	1 pc End Entry	R	Reduced	W06	600 W.P.	11	A105N
BF	Ball Valve Floating	1	Adjustable Packing- Flanged (API 608, ASME B16.34)	B	2 pc Split- Bolted	F	Full	W08	800 W.P.	12	WCB
BFM3L	3-Way, L-Port, Floating Ball			C	2 pc Threaded			W10	1000 W.P.	22	LF2
BFM3T	3-Way, T-Port, Floating Ball	2	Adjustable Packing THRD,SW,NIPPLE,B W Ends (API 608, ASME B16.34)	D	2 pc Seal Weld			W15	1500 W.P.	24	LCC
BFM4L	4-Way, L-Port, Floating Ball			E	3 pc Bolted			W20	2000 W.P.	34	304SS / CF8
BFM4T	3-Way, T-Port, Floating Ball	3	O-Ring Stem Seal	F	3 pc Threaded			W21	2160 W.P.	36	316SS / CF8M
		4	Metal Seated Valve	G	3 pc Welded			W22	2200 W.P.	71	Monel
								W30	3000 W.P.		
								W36	3600 W.P.		
								W60	6000 W.P.		

7. Trim Material		8. End Connections		9. Seat		10. Seal		11. Features		12. Operator	
Code	Description	Code	Description	Code	Description	Code	Description	Code	Description	Code	Description
10	C.S. + ENP	TH	Female Threaded	N	Nylon	V	Viton	NF	NACE compliant, Fire Safe Tested	L	Locking Lever
34	304SS / CF8	SW	Female Socket weld	T	PTFE	H	HNBR		NACE compliant, Fire Safe Tested	B	Bare Stem
36	316SS / CF8M *	WW	WE x WE	D	Devlon	L	Low Temp. (-50 F.) O-Ring	NW	NACE compliant, Non-Fire Tested	A	Actuated
71	Monel	WF	WE x Flange	H	HNBR	P	PEEK		NACE compliant, Non-Fire Tested	G	Manual Gear
		ST	Fem. SW x TH	R	R-PTFE	G	Graphite	WF	Without NACE, Fire Safe Tested	H	Non-locking Lever
		ES	Extended End Female SW	C	TFM 4215	T	PTFE		Without NACE, Fire Safe Tested	C	Chain Wheel
				M	TFM 4105	M	TFM	WW	Without NACE Non-Fire Tested	O	Oval Hand wheel
				J	TFM 1600	E	EPDM			S	Spring Return Lever
				P	PEEK	F	Delrin				
				E	EPDM	K	Kel-F				
				F	Delrin	1	Metal				
				1	Metal						

13. Modifier Code

Code	Description
	Special configurations.

* Ball and/or stem may be furnished as 17-4ph stainless steel for improved hardness and durability.

Pressure—Temperature Chart

Temperature (degrees F)	Pressure (psig)
0	3600
100	3600
200	3500
300	3400
400	3200
500	0

Distributed by: